

Operative Experience

Simulator Firmware Upgrade Procedure

Introduction

This document explains how to upgrade the Firmware for OEI Simulator platforms.

Requirements

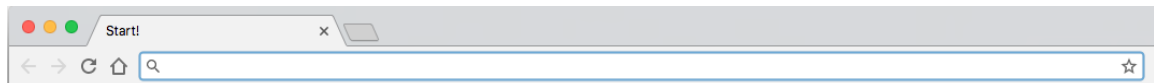
- A Laptop or a Computer Desktop with Wi-Fi Card – referred in this document as “the computer”
- Administrator access to the Laptop or Computer Desktop to be used during this procedure
- Access to Internet
- An Internet Browser. Supported Browsers and their versions are:
 - Chrome: 63.x.x or Greater
 - Firefox: 54.x or Greater
 - Safari: 11.x.x or Greater
 - Edge: 41.x or Greater

Instructions

1. Connect “the computer” to the Internet
2. Go to www.operativeexperience.com/support and download the latest firmware software file for your simulator (.oei file). Follow the instructions on the web-page
3. Power up the simulator
4. Once firmware software file has been downloaded, select the Simulator Network via “the computer” network settings
5. Switch “the computer” network to the Simulator Network

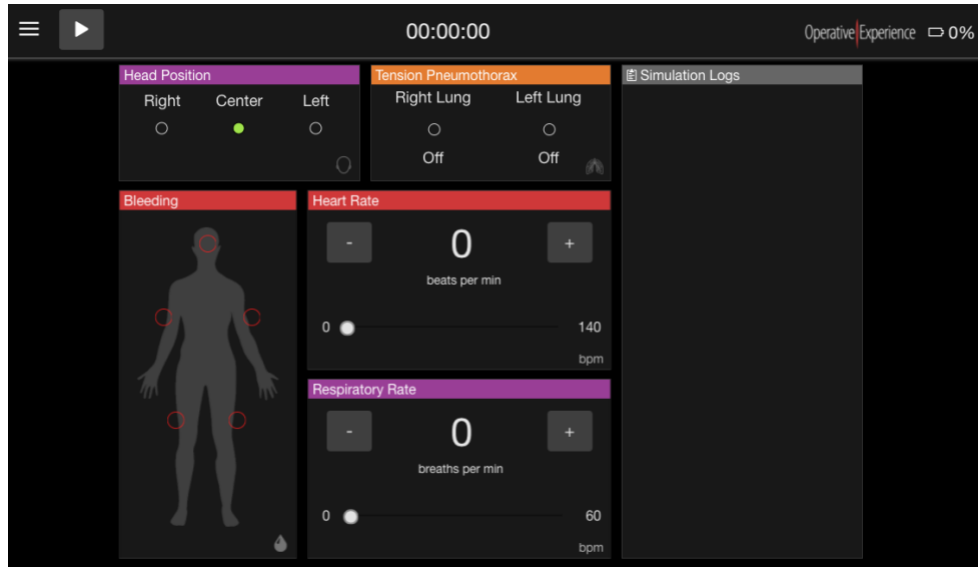
IMPORTANT: During this process, only “the computer” can be connected to the Simulator and NO OTHER device; Tablet and/or ICI, should be connected to the simulator. Failure to do so might corrupt your system will make your simulator unusable

6. Open the Internet Browser

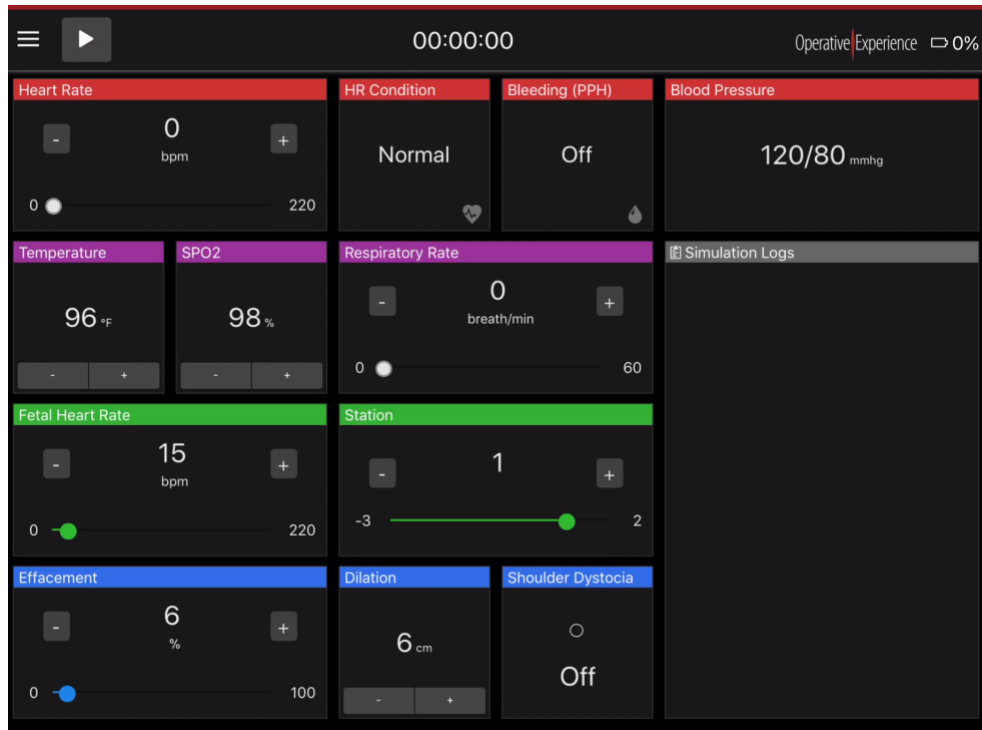



- a. In the URL field, type the following: <http://10.42.0.1>

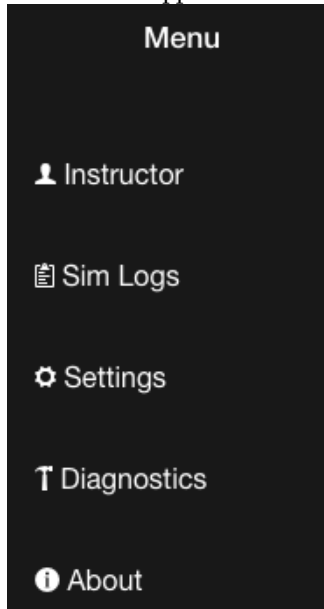
7. The following screen should appear
- For Tactical Simulators



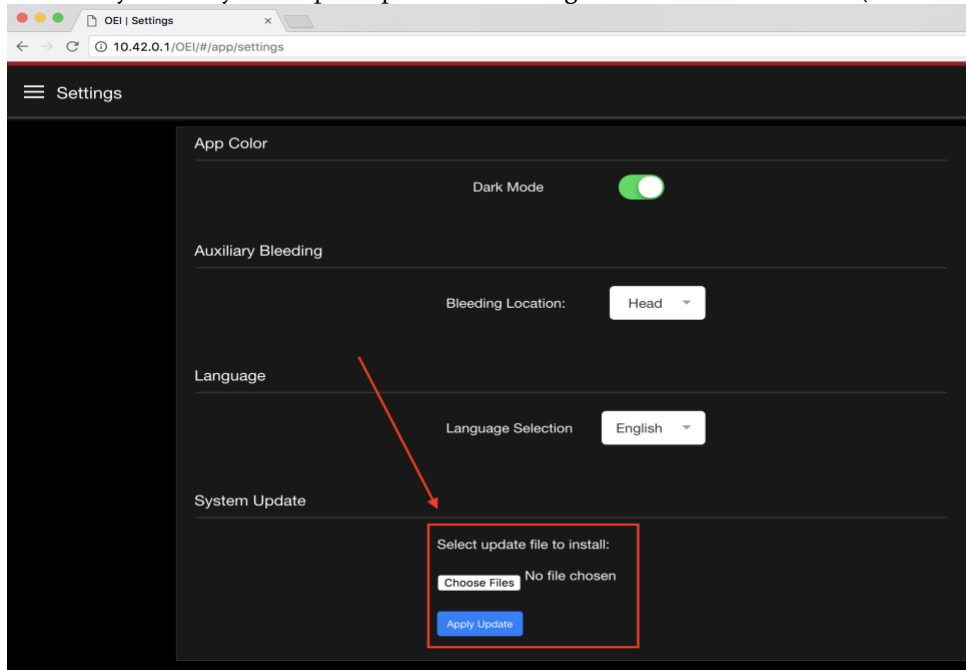
- RealMom Simulators



8. Click of the Application Menu – Three Line icon  and from the Menu, select Settings

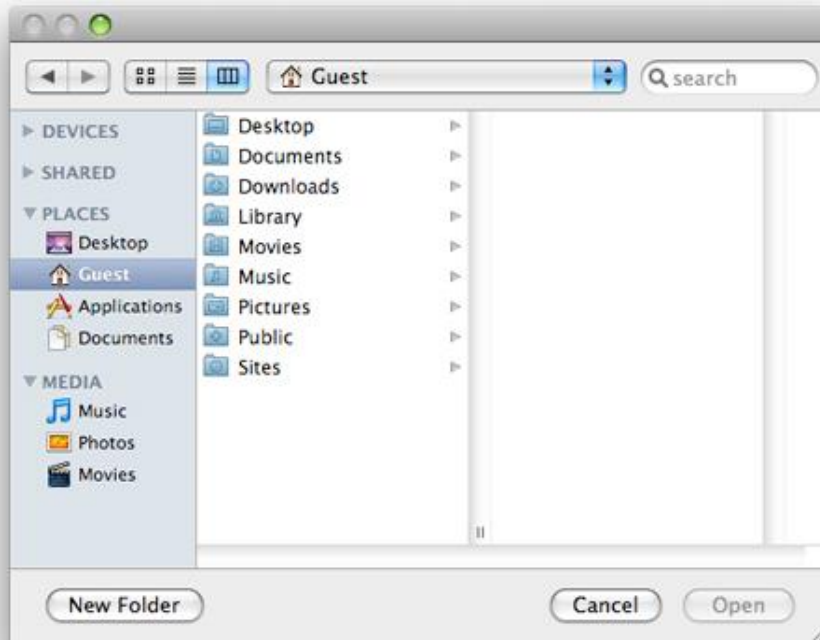


9. Settings screen is different for Tactical and for RealMom, therefore we want to make sure we focus exclusively in the System Update portion of Settings that is identical to both (see red square)

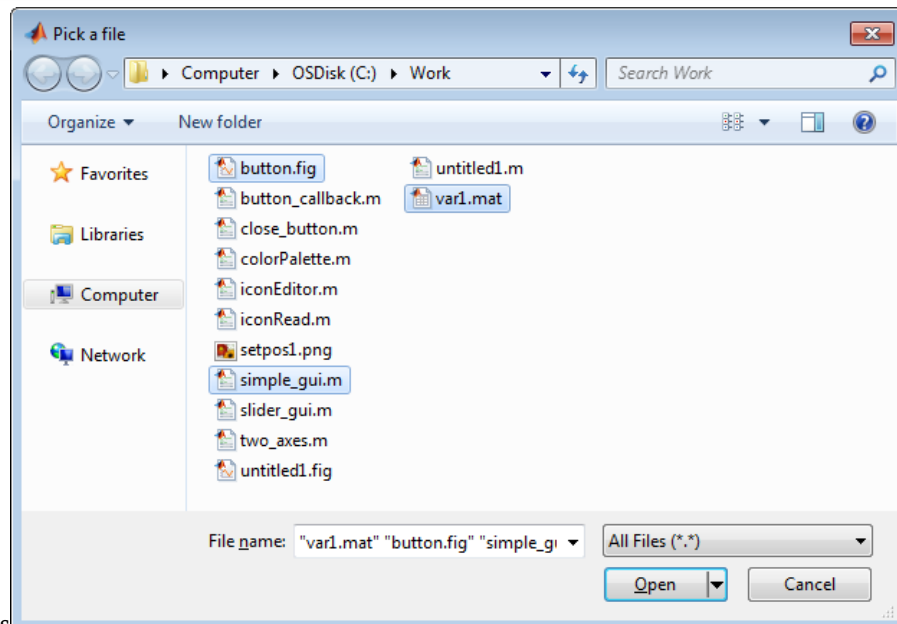


10. Click the "Choose Files" button
- The File Picker/Select Window will appear. Depending on the version of "the computer" Operating System" the File Select Window might be different

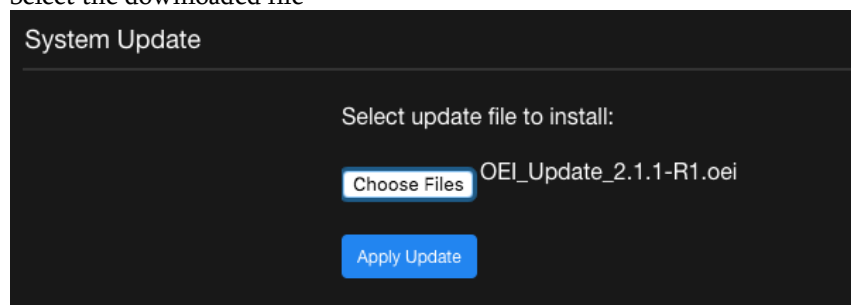
b. Mac OS



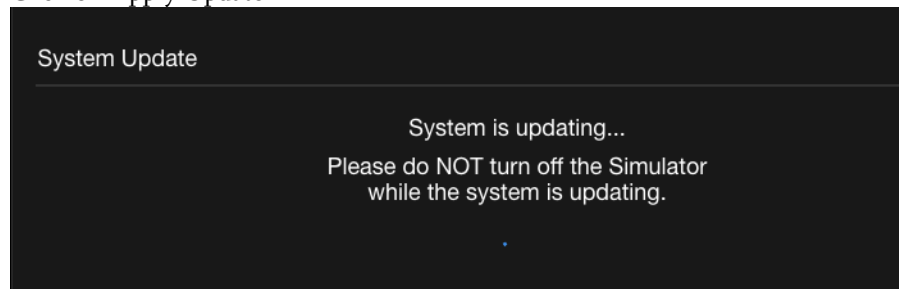
c. Windows



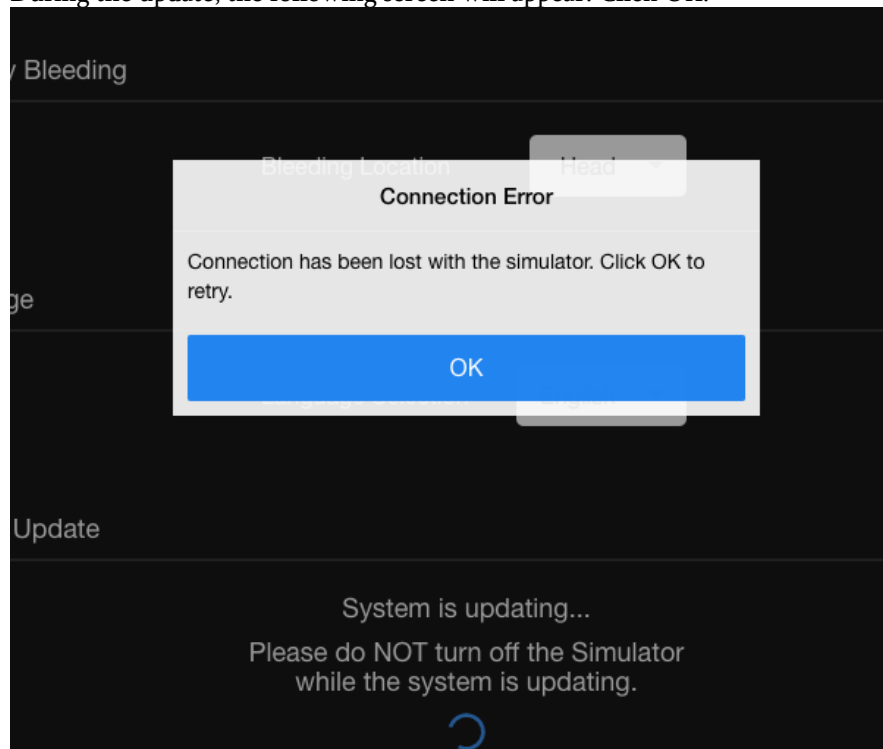
d. Select the downloaded file



- e. Click on Apply Update

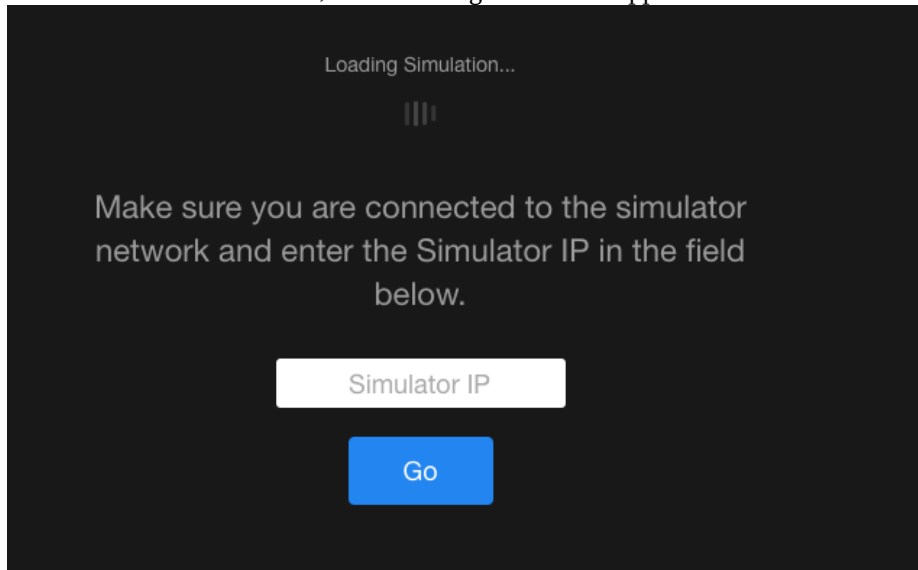


- f. During the update, the following screen will appear. Click OK.

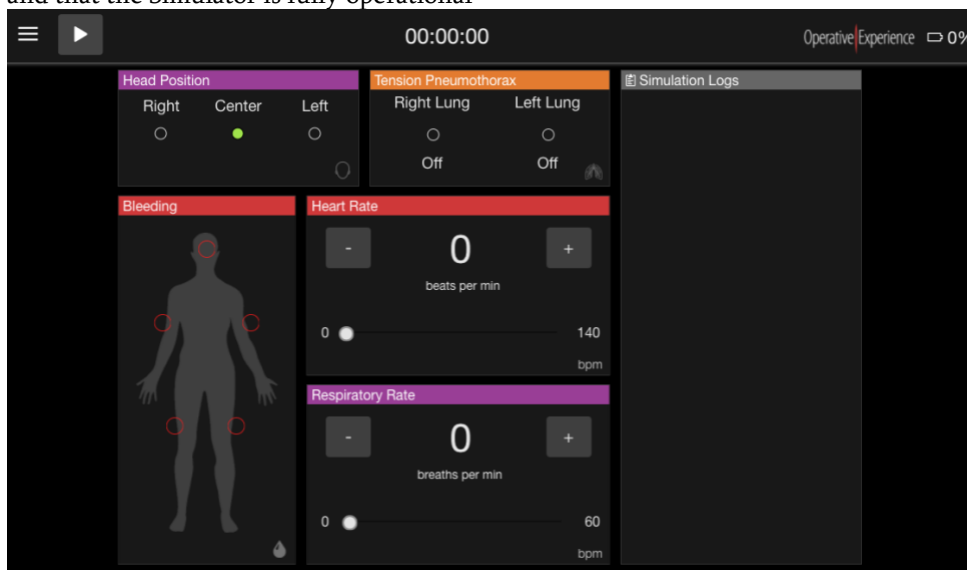



Once the Simulator update has been completed re-join the Simulator Wi-Fi and check update status

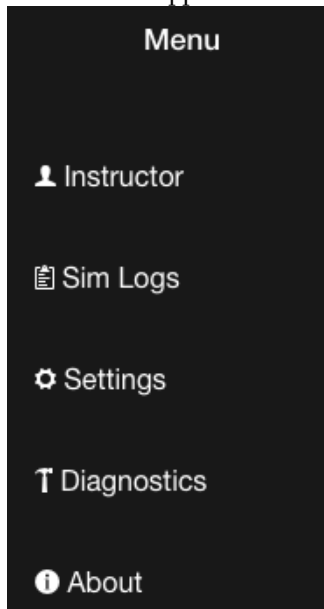
11. Once the Simulator Restarts, the following screen will appear




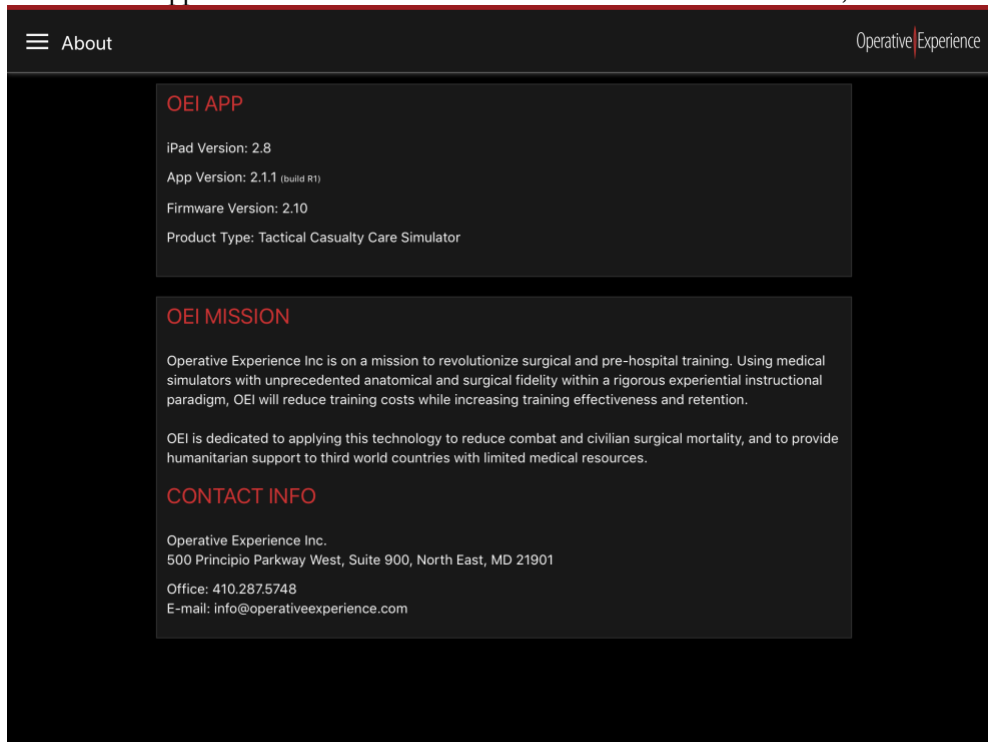
12. At this point, it might be necessary to re-join the Simulator Wi-Fi Network. Once "the computer" re-joins the Simulator Network, make sure the new versions have been installed and that the Simulator is fully operational



13. Click on the Application Menu – Three Line icon  and from the Menu, select About



- a. Check the following three bullets against the current configuration Information for the Product Type you are configuring:
- i. App Version
 - ii. Firmware Version
 - iii. Product Type:
- b. Once the above step is complete, quit the Internet Browser and exit “the computer” from the Simulator Network.
14. Using your Tablet Instructor Control Interface (ICI), join the Simulator Network and start the OEI Sim application
15. Click on the Application Menu – Three Line icon  and from the Menu, select About



16. Your Tablet ICI will give you additional information beyond “the computer” Internet Browser. Make sure, your App is running the desired version.